

SPIRITUAL GROUPS

Do you hunger for a deeper experience with God and the encouragement of a small Christian community? Get connected with one of the following groups near you.

DUNSTABLE

Dunstable : Wednesdays fortnightly : 7.30pm
//Etienne & Carolyn Guenin

FLORENCE'S PRAYER GROUP

Watford : Saturdays fortnightly : 3pm
//Florence Allen

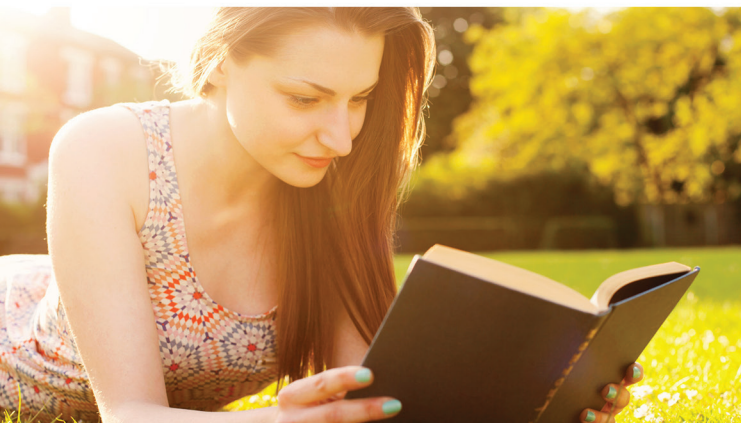
PARENTS IN PRAYER

Stanborough Centre : 4th Saturday : 4.30pm
//Therese Valsin



REALLY USEFUL BOOK CLUB

Watford : Sundays monthly : 11am
//Vanessa Pizzuto



WHY SHOULD I JOIN A LIFE GROUP?

*"I have come that you may have LIFE,
and have it in abundance!" Jn 10:10*

Life is so much more abundant when you have an active relationship with God and strong, supportive friendships. Life Groups provide a great opportunity for you to experience both of these things! They are also one of the most successful ways of reaching out to those who don't yet know how much God loves them. So, if you want to grow in your faith, develop deep friendships and bring people to Jesus, commit to joining a Life Group today!

LIFE GROUP PRINCIPLES

- Everyone is accepted, affirmed and encouraged.
- Individuals explore, develop and share their God-given gifts.
- Groups aim to make disciples, grow and multiply.

NEW LIFE GROUPS

The following Life Groups will be starting soon...

Social Groups: MK Sewing, The Boys, Vegetarian Cookery

Service Groups: Hospital Feeders

Spiritual Groups: Abbots Langley, Hemel Hempstead, Milton Keynes, Really Useful Book Club

If you would like to be a part of one of the above groups or feel inspired to lead/host a new Life Group, please get in touch using the contact details below.

CONTACT

Pastor Mary Barrett: 07961 777446

Etienne & Carolyn Guenin: 07824 643489

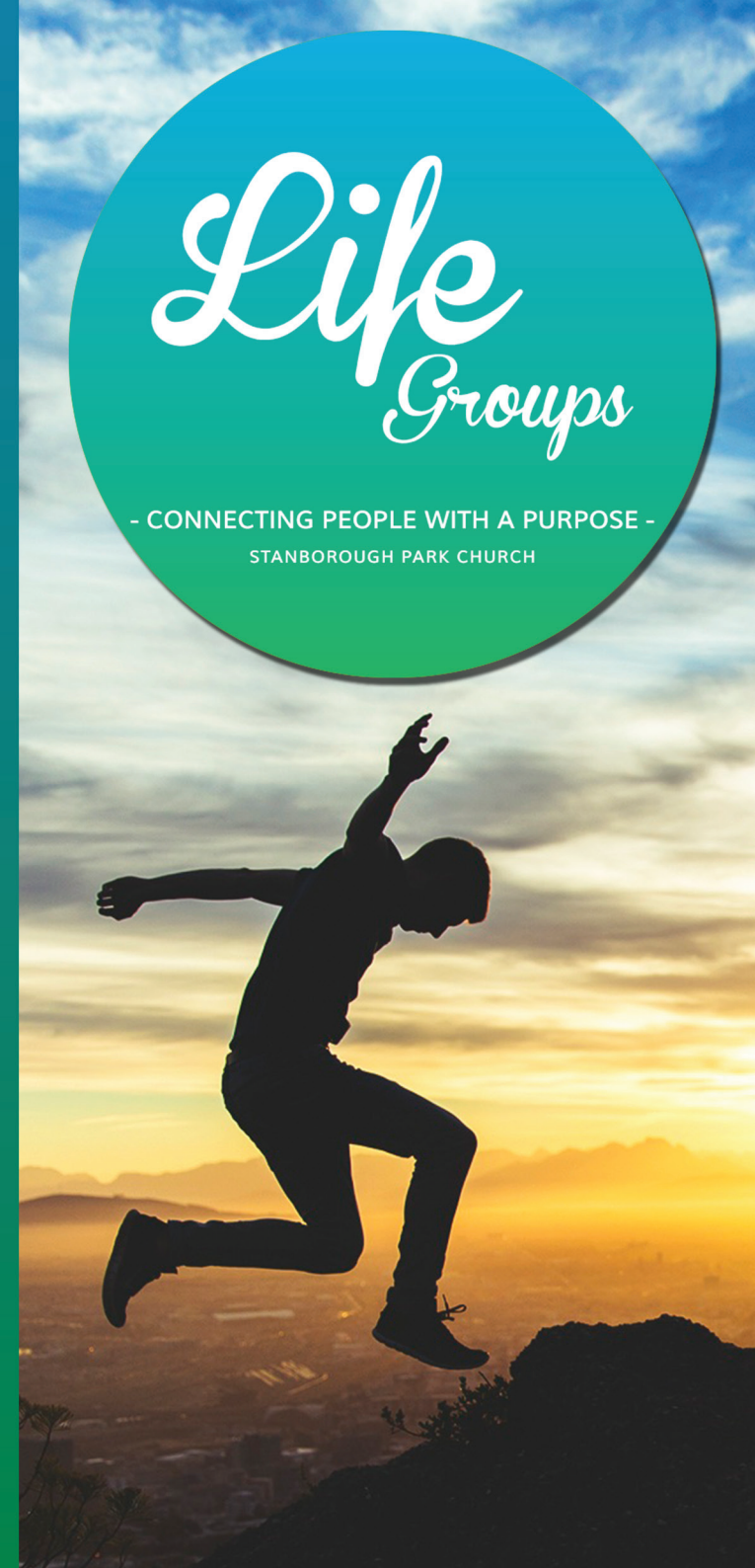
lifegroups@stanboroughpark.org

For up to date information on Life Groups, please visit:

WWW.STANBOROUGH PARK.ORG/SMALLGROUPS

facebook.com/stanboroughpc

609, St. Albans Rd. - Watford - WD25 9JL



SOCIAL GROUPS

Are you looking to make new friends who have similar interests to you? Come along to a social life group!

CHARITY KNITS

Stanborough Centre : Wednesdays : 1pm
//Jo Gentle

LET'S EAT SUPPER

Watford : Monthly : 6.30pm
//Jackie Ramharacksingh & Eileen Hussey

LET'S WALK

Various locations : Saturdays monthly : 3pm
//Ed Hammond



MEN'S CYCLING

Various locations : Sundays monthly : 10am
//Arto Keshishian

MOVIE CLUB

Stanborough Centre : 1st + 3rd Tuesdays : 7.30pm
//Jef Nascimento

ROOTS AND BOOTS

Horseshoe Lane : Sundays : 2pm
Leggatts Way : Wednesday, Thursday, Friday : 7.30am
//Karen Hubbard



SERVICE GROUPS

Have you been waiting to join a team that focuses on serving others? Take a look at these opportunities...

SINGING WITH SENIORS

Watford : Saturdays : 3.30pm
//Susie Moser

SOUP RUN

Stanborough Centre/London : Fridays : 8pm
//Pat Walton

WELFARE DEPARTMENT

Stanborough Centre : Various days : Various times
//Pat Walton



SPIRITUAL GROUPS

Do you hunger for a deeper experience with God and the encouragement of a small Christian community? Get connected with one of the following groups near you.

THE GRATITUDE CLUB

Watford : Tuesdays : 7pm
//Mary Barrett

TUESDAY STUDY GROUP

Stanborough Centre : Tuesdays : 10.30am
//Patrick Boyle



WOMEN IN PRAYER

Stanborough Centre : 2nd Saturday : 1pm
//Mirian Keshishian

