

S*ParkLife 5

(Lockdown News 22)

➤ IN THIS ISSUE:

- 'Souper Troupers': senior members leading by example!
- COVID – the Way Ahead?
- Pastor Terry's Easter Message
- More News
- Welcome to Stanborough Park Church Fellowship
- Youth News
- Information and Announcements
- Church Business and Additional News
- The Stanborough Park Church Story 1 – In The Beginning
- The Big Debate and The Final Word
- Special Easter children's supplement attached (online version only)

Stanborough Park Church
Newsletter: March 2022



CHURCH VOTES TO END COVID RESTRICTIONS WITH IMMEDIATE EFFECT. "We will follow government guidelines" - so no limit on numbers etc

➤ NEWS

- 'Souper Troupers' – senior members leading by example! 'Souper Sabbath' held on March 5th



With the government removing restrictions on daily lives at the end of February, the second anniversary of closing the church for worship seemed to be a good time to re-start the regular events from the pre-COVID era such as Fellowship Lunches and the traditional Pat's Sale. However, with so many near-empty pews being featured in the 'livestream' broadcasts and the church's restriction on numbers, masks preferred, suggesting that things were still some way away from being 'back to normal', was this a good time to recommence Fellowship Lunches after all?

However, there was no cause for concern for out of camera range, in shots only seen when the remote camera was turned towards the congregation during the hymns, the pews were far from empty! Some time after the end of the worship services on 'Souper Sabbath', the rear car park was still around 75% full and the number of people lingering in the Cedar/Sycamore Room and the concourse chatting, which in places turned out to be as crowded as ever, all indicated yet another return to 'church as normal'.

The kitchens were a hive of activity with more than soup and rolls being prepared to feed those who remained after the services ended to enjoy the fellowship. And the first to appear in the Cedar/Sycamore Room to take advantage of the hospitality on offer was a representative sample of the very senior members, mostly over 80 and belonging to the group deemed most 'vulnerable' by the government, the same people who had coped with the Second World War during their youth and were not going to be defeated by a battle with a virus!

For regular attendee Ruth Blewitt (89), who described the event as 'very nice', it was an opportunity to recreate the pre-COVID era and catch up with old friends, especially for those who like her live on their own. Giving her view from the kitchen, Alison Burgess remarked how nice it was to see people enjoying the fellowship and reckoned there were about 30 people altogether, representing all age ranges.

Volker Herkner, an intensive care nurse in a London hospital, was helping out with the setting-up. This led to a discussion regarding the current state of our hospitals which he claimed were now operating normally and the special units closed, largely thanks to vaccines, the less serious nature of the current variant and acquired immunity. He is pleased to see that church is open for worship and many of its activities are returning to normal. He feels strongly that now is the time for us to learn to live with COVID. "Life was never 100% safe before Covid and will never be 100% safe as long as we are this side of eternity," he points out. Those senior members seemed to share that view. He has kindly agreed to share his views with readers and has submitted the article reproduced below.



Easter is traditionally associated with new life and change and, despite the sadness associated with Good Friday, a positive outlook. In view of the government's removal of restrictions, is it not time to use this special celebration in the Christian calendar as the start of a resurrection of the habit of attending church in person again?

***Note:** the BUC car park is available again for additional parking but the main gates have been replaced by electronic ones. If closed on exit, driving up to (but behind) the yellow line will open the gates automatically.*

➤ **COVID – THE WAY AHEAD? (Submitted by Volker Herkner R.N.)**

It has now been almost 2 years to the day since the UK Government declared a major health emergency and lockdown over the Covid-19 pandemic. As of spring 2022 we are at the stage where we are moving from the pandemic to the endemic stage of the Covid-19 outbreak, which means that Covid-19 continues to be present and people will continue to get infected (and re-infected), new variants will appear, but the course of the disease will be much milder, leading to less hospital admissions and will in due course become much like the common cold.

As of 18th March, the UK government has dropped all pre- and post-travel testing and as of 1st April free mass testing will cease. While this is welcome news to some of us – and indeed it is – others may feel they are going into an uncertain future. But as with all things, we cannot influence the arrival, discourse and future direction of pandemics, wars and natural disasters, but can only respond to the circumstances. So, what can you do to strengthen yourself as we move into the endemic phase?

1. Optimize Immune System

Simple health promoting practices such as a healthy diet, exercise, sufficient sleep, reducing stress and above all fresh air are all simple steps that can be taken to help optimise health. Also, addressing pre-existing health issues such as high blood pressure, diabetes, obesity, as well as keeping up with regular health checks and medical appointments can support and improve health. An improved health can help the body to fight diseases better.

2. Immunity

By now most people will have acquired some form of immunity either through a course of vaccination, previous infection or a 'hybrid', meaning they had both the infection and the vaccine. The data available is demonstrating a much lower case rate in people who have either had a previous infection or received a course of vaccination or had both. The only group that remains at a higher risk of severe disease is the one who has had neither. Also, the Omicron variant, despite being much more transmissible, has shown to cause much milder symptoms leading to a milder course of disease and less hospitalisation.

3. Mental Health and returning to pre-Covid activities

The quieted side-effect of the lockdowns has been a steep decline in the nation's mental health across all age groups. Enforced isolation and fear combined are terrible ingredients debilitating the mind. It is recognised that for many it will be more difficult to come out of the pandemic than it was going into it. Living in the digital age we are now in a state of hyperawareness of many dangers surrounding us.

If you are concerned about catching Covid, *Speak* to your health professional to help you assess your 'individual real risk' of severe disease. Many are overestimating their risk from catching Covid. *Talking* to a health care professional can help alleviate some of these anxieties. In the same time make a plan with your health care professional what treatments are available to you should you catch Covid. Continue to optimise your health with the above mentioned steps and gradually return to your pre-Covid activities.

With restrictions on attending church in person lifted Volker finishes with a plea to fellow members. *"Church is open! Let us come into the presence of the LORD together with fellow believers, turning our focus upward to where our help and ultimate healing comes from. Looking forward to seeing you."*

➤ PASTOR TERRY'S EASTER MESSAGE



Little Philip, born with Down's syndrome, attended a third-grade Sunday School class with several eight-year-old boys and girls. Typical of that age, the children did not readily accept Philip with his differences. But because of a creative teacher, they began to care about Philip and accept him as part of the group, though not fully. The Sunday after Easter the teacher brought Easter egg containers, the kind that look like large eggs. Each receiving one, the children were told to go outside on that lovely spring day, find some symbol for new life, and put it in the egg-like container. Back in the classroom, they would share their new-life symbols, opening the containers one by one in surprise fashion.

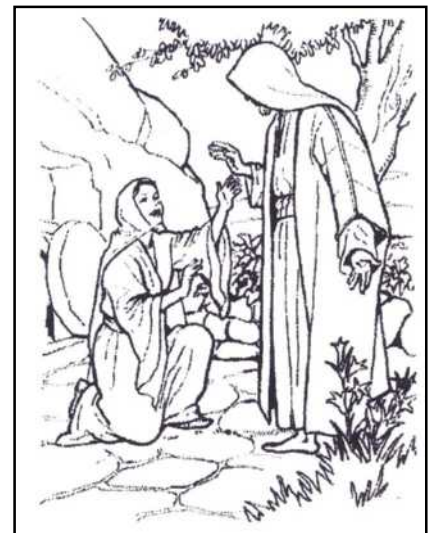
After running about the church property in wild confusion, the students returned to the classroom and placed the containers on the table. Surrounded by the children, the teacher began to open them one by one. After each one, whether flower, butterfly, or leaf, the class would 'ooh' and 'ahh'. Then one was opened, revealing nothing inside. The children exclaimed, "That's stupid. That's not fair. Somebody didn't do their assignment." Philip spoke up, "That's mine." "Philip, you don't ever do things right!" the student retorted. "There's nothing there!" "I did so do it," Philip insisted. "I did do it. It's empty; the tomb was empty!" Silence followed. From then on Philip became a full member of the class.

He died not long afterwards from an infection most normal children would have shrugged off. At the funeral this class of eight-year-olds marched up to the altar not with flowers, but with their Sunday school teacher, each to lay on it an empty egg container.

Indeed, the tomb is empty. A symbol that the one who died was no longer there! In that empty tomb there is hope for all of us, for it signifies that our loved one's tombs will one day be empty when Jesus comes back to this earth. Indeed our own

tombs will lie fallow when Jesus raises us up at the last trump. In our world full of trouble this is the great hope we have. Death will one day be defeated!

But I am telling you this strange and wonderful secret: we shall not all die, but we shall all be given new bodies! It will all happen in a moment, in the twinkling of an eye, when the last trumpet is blown. For there will be a trumpet blast from the sky, and all the Christians who have died will suddenly become alive, with new bodies that will



never, never die; and then we who are still alive shall suddenly have new bodies too. For our earthly bodies, the ones we have now that can die, must be transformed into heavenly bodies that cannot perish but will live forever.

When this happens, then at last this Scripture will come true—"Death is swallowed up in victory." O death, where then your victory? Where then your sting? For sin—the sting that causes death—will all be gone; and the law, which reveals our sins, will no longer be our judge. How we thank God for all of this! It is he who makes us victorious through Jesus Christ our Lord! 1 Cor 15:51-57 (Living Bible)

I wish you a blessed Easter time and that your loved ones who have passed away that their tombs will one day be empty!



➤ **MORE NEWS:**

● **PAT'S CLEARANCE SALE HELD ON 12TH MARCH**



According to Pat, "The sale went well. There were about 130 people who came through the door. The ladies clothes that had designer labels on them plus very expensive shoes proved to be good sellers. We made £1315. I was very pleased with the funds raised - 50% to ADRA-Ukraine and 50% to the Soup Run."

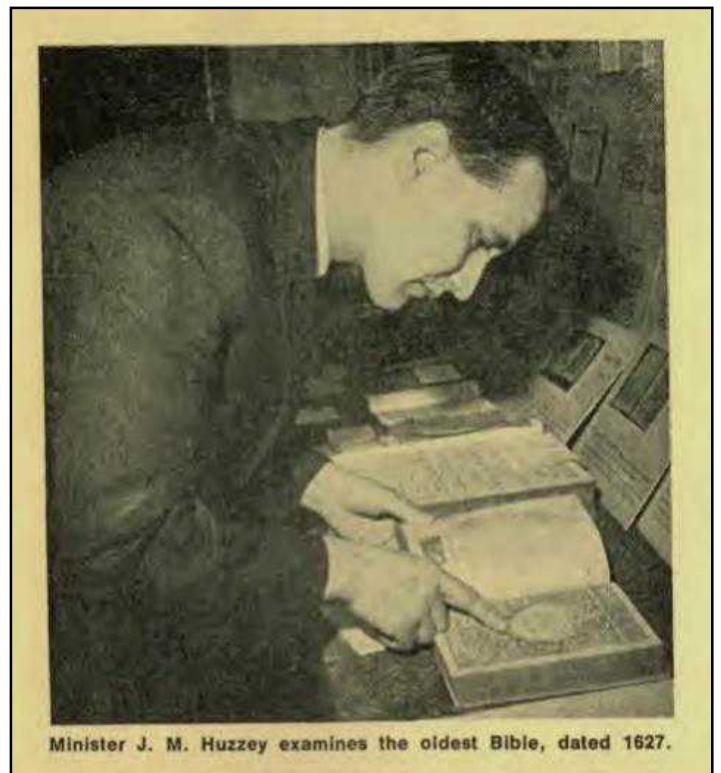


● **PASTOR HUZZEY TO THE RESCUE!**

Pastor Jim Huzzey allowed his arm to be twisted into delivering the sermon on Global Youth Day when the planned speaker pulled out through illness that morning.

It is rather ironic that the planned young speaker was replaced by one of our senior members! Doubtless Pastor Huzzey will maintain that he is young at heart even though he was claiming that he was delivering his 'third final sermon'! It contained a simple message and good advice for Christians and worth viewing if you have missed it.

In his sermon he referred to the evangelical campaigns he was involved in during his early ministerial days. S*Park Life has been able to track down one such campaign. (Messenger Vol. 72 no. 1, January 6, 1967) By coincidence one of the campaign's contacts was a person who had known his Welsh grandfather. Perhaps Pastor Huzzey would be willing to tell us this story as well as the interesting one behind this photo. Maybe in S*Park News' first podcast? How about it Pastor Jim? And may you preach many more 'last sermons'!



➤ **WELCOME TO STANBOROUGH PARK CHURCH FELLOWSHIP**



• **BAPTISM**

Mrs. Janet Melbourne was baptised on March 12th.

I wish to be baptised because I fell in love with God the Father, His Son Jesus Christ and the Holy Spirit.

I have known about Them for most of my life that They were there, but in the past I never spent time building a personal relationship with Them. I felt something was missing in my life, so I began to ask questions. I started to pray and study daily, finding things to watch about the Bible and I found most of the answers I was searching for; along with an overwhelming feeling of joy and happiness.

I want to be baptised because I am ready to prove how much I love and wish to serve Our Father, His Son and the Holy Spirit.

• **BABY DEDICATION held on 26th February.**

Caleb Jayden Murray-Shek, the son of Darren and Mary, aged 9 months. He was born on 27th June, 2021. Yet another new member for Cradle Roll Sabbath School.



• **STUDENT MISSIONARIES**



Hello to Flo and Gabriel who are our new student missionaries.

"Hello! I am **Florencia Jiménez** and I am from Chile. I am

23 years old, and I have finished my degree as a psychologist last year. I am happy to be at Stanborough Park Church, and to give this year completely to the service of God and the community of Watford. I hope to meet you all and be a blessing to all of you and this beautiful church. God bless you all."



"My name is **Gabriel Colins Silva**. I am 28 and have a bachelor degree in Psychology. I'm from Brazil and I have been doing volunteer work for the church for the past 3 years. I am glad for the opportunity to be here in the UK, and with all these beautiful people. My hope is for God to lead me continuously for me to do His work according to His will.

➤ **YOUTH NEWS**

- **ADVENTURER AND PATHFINDER BIBLE EXPERIENCE:** Thank you for keeping the Adventurers and Pathfinders in your prayers. They are now advancing to the Division Test in Belfast (Adventurers and Pathfinders) and Oregon, USA (only Pathfinders) during April. Parents and mentors are finalising travelling plans. Please contact Bukky, Ngozi or Davide if you would like to sponsor a child.
- **YOUTH WEEK OF PRAYER was held during the final week of March.** Meetings were held every evening both at Church and on Zoom between 7pm-8pm each evening.



- **GLOBAL CHILDREN DAY 19th March:** As the young people were out in the community on this special day, Children’s Sabbath schools teamed up with Parallel and Traditional Services and our children were very involved in the Worship services on this date.
- **GLOBAL YOUTH DAY (GYD) was held on 19th March.** GYD is a worldwide initiative that encourages our young people to 'be the sermon' by serving their communities instead of attending church. Our teens will be handing out flowers with God's promises attached, cleaning up local parks, tending to gardens, collecting prayer requests and more! Another way the teens wish to contribute to their local community is by distributing some of their favourite cultural and familial recipes. The [recipe booklet is attached](#) for anyone who wishes to try some new ideas! Please pray for them as they seek to bless our local community. Naomi says that information has been supplied to BUC News which will be covering activities throughout the country. She says that photos of the event and 'All our GYD info is on Facebook [here](#).' A selection of photos are shown below.



➤ INFORMATION AND ANNOUNCEMENTS

- **WE ARE SAD TO ANNOUNCE** the death of Tina Cuthbert on Wednesday 16th March. Tina was a member of Stanborough Park Church for many years and the mother of Denise Cuthbert. **Please remember the Cuthbert family in our prayers.**
- **ADRA's UKRAINE APPEAL:** your Church Board voted to match all donations for Ukraine, up to the sum of £10,000.00. **We have now reached that goal so** that ADRA will have at least £20,000.00 to use to help those in such dreadful distress. This is the most effective way in which we can help at the moment. ADRA donation envelopes are available - see a deacon or deaconess to obtain one. Please write UKRAINE on the front if you wish your donation to go to the Ukraine Appeal. If you wish to donate online to the Church Treasury account please put Ukraine as the reference so that the funds will be matched. If you have already sent a donation to ADRA UK directly, please let one of the Elders know so that your donation can be added to the church total.
- **SEC HEALTHFEST - STANBOROUGH PARK, 1ST MAY:** the SEC is looking for volunteers to help on the day - especially marshalling duties. Please contact Barbara Lawrence if you wish to help and she will give more details. Her contact details are 07940 007331. Alternatively, you may give your names to the pastoral team.
- **MIDWEEK PRAYER MEETING** every Wednesday on Zoom by **7pm**. For Zoom details see e-bulletin.
- **ADULT SABBATH SCHOOL: Pine Room class:** (meets in Pastor Terry's office) and **Maple Class:** see **electronic bulletin for Zoom links.**
- **CALLING ALL FIRST AIDERS:** the ministerial team wants to identify people who have been trained in First Aid and hold a certificate as well as those whose certificate has lapsed. We are also looking for people who would like to be trained as a First Aider. If you fall into any of these categories please let the pastoral team know.
- **THE PRAYER MINISTRY TEAM** would like to start a WhatsApp Group for everyone. On this Forum you can make your public Prayer Request and you will be reminded of all the Prayer Activities. If you would like your details to be added please contact [Bella](#) or [Uche](#).
- **UPCOMING DATES:**

9th April: Communion	30th April: Baptism in the afternoon
16th April: Easter Service	1st May: SEC health fest on the Park 12-6pm
- **A MEMORIAL SERVICE** for all those who died during the pandemic will be held in the church on 14th May.

➤ PARTIAL REPORT FROM THE NOMINATING COMMITTEE (1st reading):

- **Family Service Worship Committee:** Cathy Boldeau (**Music co-ordinator**), Angeline Pinky, Anna Papaioannou
- **Young Adults Ministry: 18-30-year-old:** Jackson Bright (**Leader**), Tiwa Adebayo (**Asst**), **Team:** Micah Bean, Zayne Mueller-Smith.

CSMC Notice: Tree surgery to prune and remove dangerous trees continues on site **resulting in a few log piles being left for those with wood burners to help themselves.**

PRAYER CORNER

PLEASE PRAY FOR - God's Guidance in the lives of the following members: Joy Bussey and Denver Annable and for Terry Menkens as he begins his treatment on Monday, 28th March.

- Families who are experiencing difficult health issues as the COVID pandemic continues.
- Everyone who is experiencing recent bereavement.
- Families who are struggling financially and otherwise due to recent economic and social crises.
- A resolution to the conflict between Russia and Ukraine. Let us pray for all the families who are affected whether it is bereavement, displacement or any other type of suffering in both Russia and Ukraine as the war continues.

- **Private Prayer Requests** can be placed in the Prayer Box or email Florence Allen at LIZALLF@hotmail.com.

➤ **CHURCH BUSINESS:**

• **RECENT CHURCH BOARD DECISIONS**

Finance

VOTED: To request the SEC to take £50,000 from the trust fund and use it to pay the HSBC loan.

VOTED: To request the SEC to take the funds from the trust fund for the heating and the roof repair/replacement.

Adult Sabbath School

There are 4 classes currently running: 3 adult and 1 young adult. After Hope channel was switched off, a live panel on the platform was introduced to lead the Scripture-based discussion with the congregation. From this week the adult SS team will install a bookcase to create a library of religious books. Members will be encouraged to bring books to share. There will be some classes in the week on Adventist Identity. Some people want to continue with Zoom classes due to joining from distances. There are different styles of adult classes which should help encourage people to attend church classes. There is only one class (Primary) on Zoom still. That class used to meet in the Oak room. There currently aren't sufficient teachers to restart the class at church. When they do move back, the young adult class will move to another room depending on numbers at the time.

The School of Music

The School of Music has made an application to hold their funds separate from those of the church and run their own accounts. Currently the Treasury is a conduit for the students to pay their fees to the College of Music, and the music tutors would give invoices to the treasury to pay the tutors from their fees. It would be treated in a similar fashion to ADRA/One Vision/other charitable accounts which don't appear on the profit/loss sheets; a single transfer is made to their account each month and they would have the responsibility for collecting all fees and paying the tutors.

VOTED: For the School of Music to handle their own account.

VOTED: To allow the School of Music to continue autonomously, with an annual report to the business meeting of their activities.

Memorial Service

During the pandemic, the rules did not allow everyone who wished to attend funerals to do so.

The pastoral team propose a Memorial Service on a Sabbath afternoon at a later date in the year to remember church members, family members and people from the community who died during this time.

• **RECENT CHURCH BUILDING MANAGEMENT COMMITTEE DECISIONS:**

Fire Safety: the next test will involve evacuation and a diagram indicating exits will be published in the bulletin; fire marshals will receive additional training including in the types and use of different fire extinguishers.

Tree Surgery: work will start soon, including dealing with a tree which fell down in the recent storm damaging a fence owned by the BUC.

Roofs: all need checking but particularly the flat roofs. Work to redo one flat roof will begin soon.

Heating: there are ongoing problems with the heating system which require urgent attention.

Deacon's Room: to be redecorated at no expense to the church – member donations – and a fire door fitted in compliance with fire regulations. **(Now completed)**

The flat has been refurbished at no expense to the church – member donation.

Church Cleaning: this will be 5 hours daily on weekdays with extra one-off cleaning for special events and a quarterly deep clean for the two kitchens.

➤ **CHURCH FINANCES AS OF DECEMBER 2021 (as published in the church bulletin)**

SUMMARY OF CHURCH BUDGET	Bdgt 2021	Actual 2021	Actual 2020	YonY%
Church Budget Offerings	72,000	74,727	73,275	+2%
Stanborough Centre Hall Hire Income [1]	58,501	17,992	30,073	-40%
Other Income	-	257	75	+244%
Activity Costs- e.g. bulletins, flowers, SVs, StSch, staff, etc.	(121,288)	(34,931)	(30,825)	-13%
Site Costs- e.g. utilities, cleaning, mntc, insurance, etc.	(45,700)	(58,347)	(40,071)	-46%
Other Overheads	(22,924)	(15,687)	(16,861)	+7%
Funds set aside for Departments		15,989	(18,358)	
Surplus/(Deficit) to date	(59,411)	(0)	(2,692)	

[1] Effect of COVID-19 closure in March 2020, then a gradual reopening in September 2021.

Church Budget Offering Trend Dec19 -Dec21

[2] Church Budget Offering Trend began to increase in June 2021 after years of decline.

SUMMARY OF OTHER FUNCTIONS	Devel't [3]	Assigned [4]	Depts [5]	Total Alloc.
Donations, Gift Aid, Dept Activities Income, etc.	100,133	25	52,431	152,589
Activities Exps, Events, Staff/Volunteers, Advertising, etc.	(65)	(16,100)	(56,338)	(72,504)
Repairs & Maintenance, Loan Interest, Insurance, etc.	(2,096)	(4,051)	(60)	(6,206)
Transfers from Church Budget	(35,574)	16,100	3,485	(15,989)
Surplus/(Deficit)	62,398	(4,026)	(483)	57,889
Add: Balance b/f (1st Jan)	(368,980)	33,925	80,966	(254,089)
Closing Balance	(306,582)	29,899	80,484	(196,200)

[3] Development Fund - Estimated time to clear deficit: 2yrs 5mths to May-2024, 1yr 4mths earlier than originally expected.
 [4] Funds set aside for specific purposes and managed by Treasury, Church Board or other Committee as appropriate.
 [5] Summary of activities for about 20 active SPC departments. Some depts building up funds for future activities.

FINANCIAL HEALTH RATIOS

[6] The ongoing aim is to maintain all three ratios above 100%.
 [7] Liquidity temporarily fell below 100% due to an increase in funding being held for departments, and funds from SEC awaited.

Thank you for your continued and faithful support of Stanborough Park Church with your prayers, time and generosity, all of which make a difference. [For any queries, please email treasury@stanboroughchurch.org]

➤ **ADDITIONAL NEWS**

- **THE CHURCH BOARD** voted on 25th March to follow government guidelines and remove remaining restrictions on attending church services.
- **A MEMORIAL SERVICE** held for the father of Tunde Adebayo on 10th March is available to view on Livestream.
<https://livestream.com/accounts/640318/events/3160916/videos/229825718>
- **SURPRISE PRESENTATION FOR MRS. BRITTA DUNTON**



Attending church as usual on Sabbath, 26th March, senior member Mrs. Britta Dunton was surprised to find herself being presented with a bouquet by SEC Family Ministries Director Pastor Augustus Lawrence in appreciation of the help she gave him as a penniless Liberian student who was unable to pay his fees. He told her when he explained to her that he didn't know how he would find the money to pay his fees but he was sure God would provide the means, she directed him to Neil Hunter, the cafeteria manager, who provided employment for the full duration of his studies enabling him to graduate debt-free. He was also grateful to her late husband, Dr. Hugh Dunton, for his sponsorship.

➤ **THE STORY OF STANBOROUGH PARK CHURCH, PART 1: the early years before there was a church on the Park and the events leading to its construction.**

Once Stanborough Park was purchased ‘the brethren’ wasted no time; within the space of a year the printing press and food factory had relocated into new purpose-built buildings and the college had moved into the mansion. The President and British Union Conference staff had moved into the press editorial block and the male students were sleeping in the press loft space. (Sanitariums were operating elsewhere in the country at the time.) On Monday, 28th October at 2.30pm in the Granose packing room (the largest room on the estate able to cater for such an event) a special service was held to dedicate the estate and all its buildings to the service of God and was attended by over 200 people.

The location was ideal for the denomination’s purposes as all the institutions had been operating in temporary premises in North London and Birmingham which were unsuitable for long term use. Here was an ideal location, rural yet close to London with good railway connections to the capital, countryside as far as the eye could see and was surrounded on two sides by woodland.

Stanborough Park would certainly prove to have plenty of space to provide accommodation for a food factory, printing press and college – and later a school. However, it is clear from records at the time that no church or accommodation for workers were featured in the initial plans for developing the Park, probably because the denomination was experiencing enough problems paying for the essential ones that had been brought to fruition so far so there was not enough money left over for ‘extras’.

The lack of a church building was clearly obvious as the Dedication Service was held in the Granose packing room which even then wasn’t large enough to hold everyone with many standing and others lining the stairs. However, it appears that a church had been included in the medium term plans at least but that various problems had cropped up delaying its construction which meant that more than 20 years had passed before the foundations could be dug. Reference to these problems is made in passing in editorials in ‘The Missionary Worker’ but they were never specified as the reasons appeared to have been common knowledge at the time.

Initially the members met each Sabbath in the hired Co-operative Hall in North Watford about 1¼ miles further south of the present church. (Marked with an O on the map, below) This was a large room over the Co-operative shop in St. Albans Road opposite the development created on Callowland Farm which consists of rows of closely-packed Victorian terraced houses constructed adjacent to the main railway line spreading alongside it as far as the tracks stayed at ground level and stretching out towards Gammons Lane in another direction and being within easy walking distance of Watford Junction made it an ideal place to live for commuters.

It was the opening of the London to Birmingham Railway on 20th July, 1837 that transformed Watford from a small country market town to a London ‘satellite’. Its 112.5 miles length made it the longest stretch of continuous track to be found anywhere in the world. Many people took advantage of the railway and moved out from London to take advantage of Watford’s fresh air and clean water which it prided itself on. The railway also facilitated the movement of goods and led to industry developing in the town which also increased the need for homes.

Stanborough Park’s close proximity to the railway was one factor involved in the choice to purchase the estate. Garston Station with its easy access to Watford Junction was within walking distance and Watford Junction provided easy access to London, the Midlands, the Northwest and Scotland.

Yet had it not been for the Earl of Clarendon, who lived at The Grove, refusing to allow the railway to pass over his land forcing a change of plans the railway would have passed up the Gade Valley alongside the canal and several miles from the Park and may have resulted in a different decision being made over purchasing the estate.

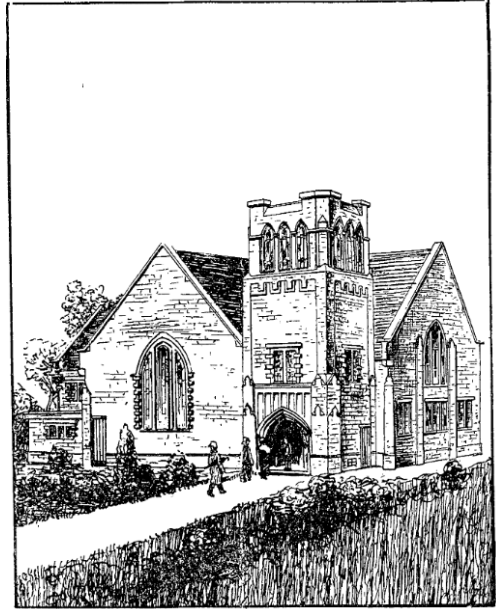


**The Missionary Volunteer: Vol 32, no. 22: Nov. 4th, 1927
Editorial**

By far the most interesting sight on Stanborough Park at the present time is the deep hole in the woods where the foundations of the new church tower are being laid. To anyone who remembers the vicissitudes through which the Park church building scheme had passed during the past fifteen or twenty years, the mere excavations bring a thrill of thanksgiving and hope.

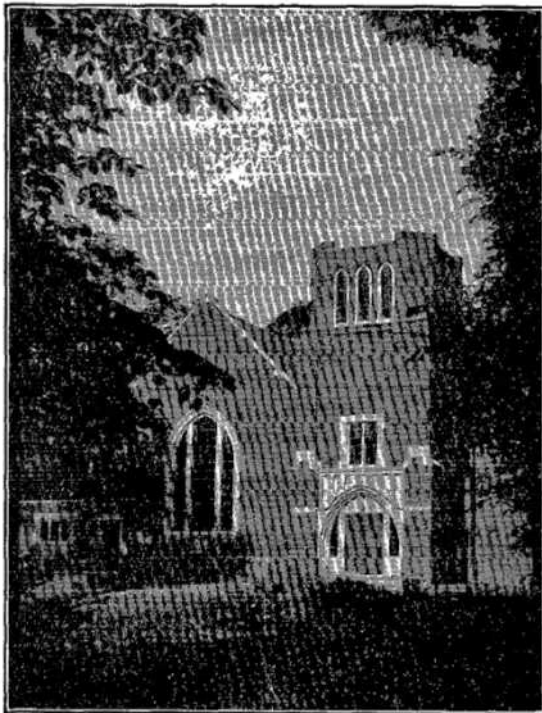
The new church has been located on the Watford side of the entrance gates, about fifty yards back from the St. Albans Road, and a similar distance from the drive. A new road has been cut from the St. Albans Road up to the church.

Monday, November 14th will be a red letter day on the Park. A half holiday has been declared for all workers and students, to enable them to attend the stone-laying ceremony. Pastor W. H. Meredith will lay the stone on behalf of the British Union Conference of Seventh Day Adventists. Afterwards all who wish to do so, (and pay 1/-) will be privileged to lay a brick in the new building.



Above right: architect's view of the new building.

**Photo below:
The Missionary Worker Vol 32, no. 15: July 27th, 192**



The New Stanborough Park Church.

The Missionary Worker, Vol 32, no. 24: Dec. 2nd, 1927 Editorial

The outstanding event of the past fortnight was the laying of the foundation stone of the Stanborough Park church building on Nov. 14th. Pastor Meredith's performed the ceremony, the stone bearing this inscription: 'This stone was laid by the President of the British Union Conference of Seventh-Day Adventists, November 14th, 1927.'

Between two and three hundred people braved the mud and the dampness to be present and, after the stone-laying, many of these took the opportunity to lay bricks in the new building.

In his address Pastor Meredith recalled the many vicissitudes through which the Park building scheme had passed since the estate was purchased twenty years ago, and expressed the hope that the new edifice would bring to the Park and the surrounding district those new opportunities of spiritual blessing which the pioneers had hoped and prayed so long. Accordingly it was with fervour that the congregation sang "Praise God from Whom all blessings flow."

This meant that the railway planners had to resort to creating a detour to the east of the town and tunnelling under the fields above to enable the railway to emerge further along the Gade valley (at Hunton Bridge near Abbots Langley) and continue its journey towards Tring.

Another factor influencing the location of the railway was the fear experienced by the residents of Watford of having steam engines passing close to the High Street (the town didn't extend much beyond that at the time). This forced the planners to take the track passed some distance to the east of the town bringing it even closer to Stanborough Park. In time this would lead to the construction of houses adjacent to the line to meet the demand of those wanting to move to the area, including the future denominational employees on Stanborough Park.

The Cooperative Hall was built around the same time as Stanborough Park was purchased on land which was being developed for housing between the main railway line, the St. Albans branch line and St. Albans Road extending as far as Bushey Mill Lane. Like the Callowland development it was ideally situated for commuters and for those in the more far-flung parts too far to walk comfortably to Watford Junction easy access by rail was available from the small station situated in Bushey Mill Lane.

These two areas would almost certainly have provided accommodation for those working on Stanborough Park and therefore the Cooperative Hall would have been an ideally-situated meeting place. It could possibly account for the reason why the first Adventist church building in the town was built in the Callowland area in 1921 (subsequently referred to as the Watford Town Church) not too far distant from the Co-operative Hall where they had first worshipped.

Agnes Poulton, whose photographs regularly appear in these newsletters, moved to Watford with

her family in 1921 who adopted it as their place of worship although it involved a walk to church of around two miles from their home at the far end of the Kingswood Farm Estate.

Finally, with the problems of the previous 15-20 years overcome, it was possible to begin construction of a church on Stanborough Park in 1927. By now a corner of the land had been sold off and homes in Holland and Spring Gardens had been built so a site tucked into a corner of the Park, adjacent to Holland Gardens and set back from the main road was chosen.

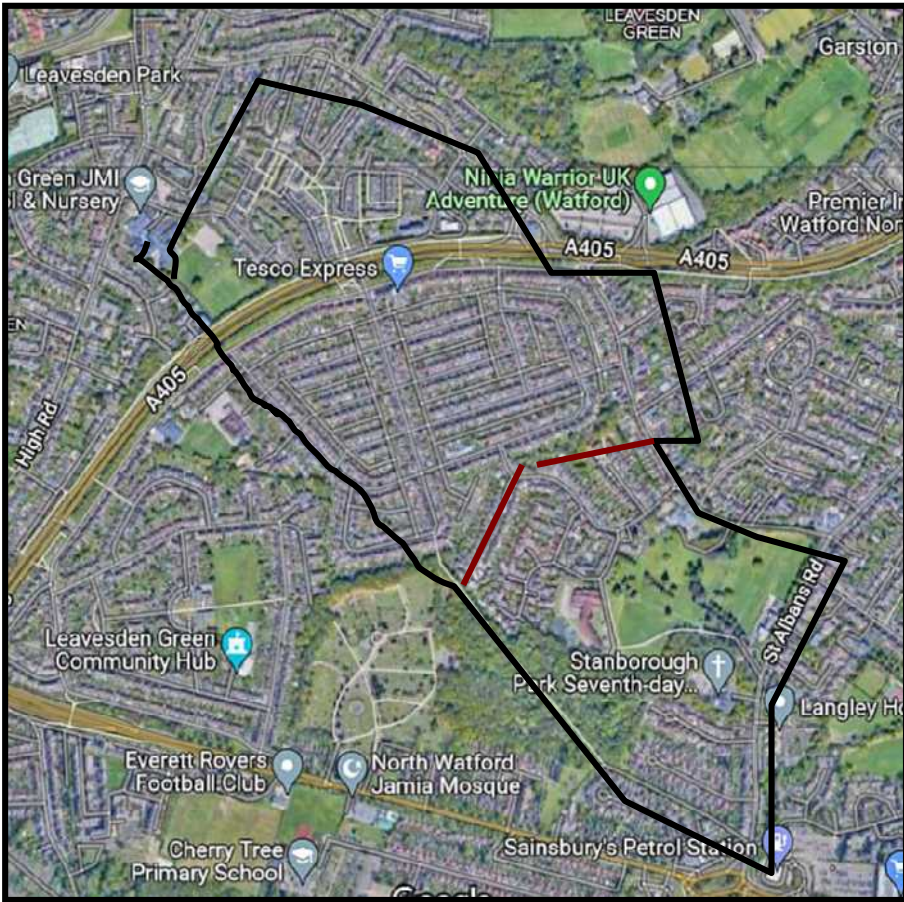
It was a wooded area necessitating a lot of ground clearance work. It was Dr. Rubel who was in charge of the San who took the lead and organised working parties of volunteers to clear the site. An architect's impression of the finished building appeared in *The Missionary Worker* at the time. The design was based on a headquarters building in Washington DC. Accounts of the progress of work on the site subsequently appeared in the journal.

By October 1927 a deep hole had appeared in the ground where the tower was to be sited. On 14th November two to three hundred people gathered in cold and muddy conditions to witness Pastor Meredith, the President, lay the foundation stone. All workers and students had been given a half day off to enable them to attend the ceremony at the end of which all sang the hymn 'Praise God from Whom all blessings flow'. Afterwards many paid one shilling (5 pence) to buy a brick and laid it inside the building according to *The Missionary Worker*.

The following July Pastor Meredith returned to perform the opening ceremony. Stanborough Park had its own church at last and Pastor Andross, the President when the Park was purchased, returned to give the address at the evening meeting.

The Missionary Worker, Vol 32, no.15: July 27th, 1928 Editorial

Last Sunday evening, July 22nd (1928), the beautiful new church building on Stanborough Park was opened. Thus yet another of the great ideas of God's people in this field has been realised. Through many disappointments some have hoped on for over twenty years, and now their brightest dreams have been more than realised. Built of multi-coloured bricks and white Bath stone, the building presents a delightful appearance amid its surrounding of green trees. Its official opening was conducted in the afternoon by Pastor W. H. Meredith, while Pastor E. E. Andross, one-time President of the British Union conference, gave the address at the evening service.



Allowing for poor mouse control (and too many failed efforts to produce something better!), this map attempts to indicate the approximate area occupied by the Stanborough and Kingswood estates. The red line attempts to show the boundary between them.

The construction of the A405 cut the farm in two making it unviable and so the rural Stanborough Park gradually found itself in an urban area surround by houses built on land once owned by the denomination.



The photos were taken by Agnes Poulton and the drawing above originally featured on the front page of the church bulletin.



Information for this article was gleaned from issues of the 'Messenger' celebrating the 50th, 75th and 100th anniversaries of Stanborough Park, 'The Missionary Worker' on the dedication of the Park in 1906 and that regarding the development of Watford and the railway were obtained from the internet and research undertaken long ago by the editor for a final-year student dissertation.

- **THE BIG DEBATE 2:** Some weeks after publishing 'The Big Debate' last year on the topic of whether or not Adventists should celebrate Christmas BUC NEWS published an original article on the same topic! This time readers' attention is being drawn to another controversial topic covered by 'Adventist World' at the end of last year - for the benefit of those who didn't receive it by post along with the 'Messenger'.
- **JESUS AND DOCTRINE:** inseparably linked

By Clinton Whaler, an associate director at the GC's Biblical Research Institute.

This excerpt is from the introductory paragraphs of an article which can be found in 'Adventist World' issue December 2021, pages 19, 20 which was adapted from Whaler's chapter in the forthcoming book: Prophetic Call to Faithfulness 2022, Review and Herald Publishing Association and Hart Research Center.

The author begins by pointing out that "‘Doctrine’ is not a very popular word today. There are movements that want to minimise doctrine and emphasise Jesus only. For some, doctrine conjures up the idea of cold church creeds, stale traditions, boring discourses, and ‘proof texting’

“While some contend that Jesus and doctrine, should not, cannot, be spoken of in the same breath, scripture makes plain that Jesus and doctrine – meaning Jesus and His teachings – are inseparable. To take one away is to take away both.”

Whaler points out that, “Almost everything we know about Jesus comes from the Bible, especially the Gospels and the rest of the New Testament. And a lot of that content consists of his teachings. The careful reader of

the Gospels recognises they are saturated with the teachings of Jesus, and that it is impossible to separate what Jesus did from what Jesus taught, because his whole life is a lesson book. If we don't know and accept Jesus' teachings how can we really claim to know him?"

He further points out that following Christ's doctrine/teachings was practiced by the early Christian church. “The thousands baptised on the Day of Pentecost ‘continued steadfastly in the apostles’ doctrine and fellowship’ (Acts 2L42). This emphasis on doctrine they learned from Jesus Himself. (See Luke 24:27, 44)” He quotes Mrs. White in Testimonies Volume 6, page 24 who points out that, “Every true doctrine makes Christ the centre, every precept receives force from His words.”

Finally he sets out to show how that still applies to every one of our church's 28 Bible Doctrines taking ‘The Remnant’, ‘The Sabbath’ and ‘The Sanctuary’ as examples.

To read the full article in 'Adventist World' goes to: https://issuu.com/adventistworldmagazine/docs/aw_2021-12_web



➤ **MEET IT - BY DENNIS JOHNSON**

When you face a problem or a challenge or a test
 Have you found the only way that works and is the best?
 I'll tell you one that is designed for every one you meet
 Meet it on your knees and never on your feet!
 Trying in your own strength may be brave but bring defeat
 Meet it on your knees and never on your feet.
 So if you want relief that feels total and complete
 Meet life's tests and trials on your knees, not on your feet.

- **THE LAST WORD:** Don't be afraid to go out on a limb; that's where the fruit is.

- P.S. No, not a new editor – just time for a change! news@stanboroughchurch.org
- A higher resolution print quality copy of this PDF can be obtained from <https://stanboroughpark.adventistchurch.org.uk>

➤ **EASTER WORD SEARCH: ALL answers on page 7.**

The Easter Story - Word Search

Find the following 20 hidden words from the Easter story in the grid. They can run in any direction (horizontal, vertical, diagonal, forwards and backwards).

Jesus
Mary Magdalene
Peter
Pontius Pilate
Golgotha
Centurion

high priest
Jerusalem
cross
silver pieces
Judas Iscariot
Golgotha

King's Road
disciples
last supper
angel
empty tomb
passover

tunic
crown of thorns
nails



O	C	S	P	J	E	S	U	S	B	O	E	P	P	C
I	J	E	R	U	S	A	L	E	M	G	Y	M	A	T
L	G	S	T	D	A	R	N	I	O	D	A	G	S	O
S	A	H	P	A	I	A	C	V	T	R	L	E	S	U
I	F	S	M	S	E	O	R	C	Y	U	I	S	O	E
L	A	P	T	I	R	L	G	M	T	R	S	S	V	A
V	N	N	G	S	A	T	A	I	P	Y	T	L	E	S
E	G	R	N	O	U	G	G	H	M	T	O	I	R	E
R	E	G	F	H	D	P	G	N	E	A	U	A	A	L
P	L	E	T	A	L	I	P	S	U	I	T	N	O	P
I	M	E	L	R	H	A	P	E	G	T	A	P	I	I
E	S	E	K	I	N	G	H	E	R	O	D	A	T	C
C	N	O	R	O	W	N	O	F	T	H	O	R	N	S
E	A	A	H	T	O	G	L	O	G	E	L	S	N	I
S	C	E	N	T	U	R	I	O	N	L	R	M	C	D



➤ **The Easter Story Quiz.**

1. What name is given to the Sunday when crowds gathered for Jesus?
 - a. Good Sunday
 - b. Palm Sunday
 - c. Easter Sunday
 - d. Christmas Day

2. What was laid down on the floor for Jesus to walk over?
 - a. Sand
 - b. Flowers
 - c. Palm Leaves
 - d. Carpet

3. What was the reaction of the crowd when they saw Jesus?
 - a. They cheered.
 - b. They booed.
 - c. They walked away.
 - d. They threw things at him.

4. What were Jesus' friends and followers called?
 - a. Buddies
 - b. Disciples
 - c. Mates.
 - d. Enemies.

5. On the Thursday of Holy Week, Jesus and his friends had a meal. What is it famously known as?
 - a. The First Breakfast.
 - b. The Next Lunch.
 - c. The Later Dinner.
 - d. The Last Supper.

6. How many people attended this meal?
 - a. 11
 - b. 12
 - c. 13
 - d. 14

7. What did Jesus do before the meal?

- a. Change his clothes?
- b. Wash his hands?
- c. Wash the feet of his disciples?
- d. Pray?

8. There were 2 main ingredients of the meal, what were they?

- a. Bread and wine.
- b. Fish and chips.
- c. Apples and pears.
- d. Tea and cake.

9. The 2 ingredients were said to represent parts of Jesus. Which parts?

- a. Fingers and toes.
- b. Body and blood.
- c. Hair and eyes.
- d. Blood and skin.

10. After this meal, Jesus went to pray. Where did he go?

- a. Garden of Eden.
- b. Garden of Gethsemane.
- c. A Church.
- d. A quiet place.

11. While Jesus prayed, Peter, James and John did what?

- a. Prayed with Him.
- b. Kept watch for people.
- c. Fell asleep.
- d. Left Him there alone.

12. What was the name of the disciple who chose this place to betray Jesus?

- a. Peter.
- b. James.
- c. Judas.
- d. Simon.

13. How did Jesus react to the news that He was to be arrested?

- a. He cried.
- b. He ran away.
- c. He accepted it.
- d. He pretended not to be Jesus.

14. When a large crowd of people turned up to see Jesus arrested, how did Judas betray him?

- a. He shook his hand.
- b. He kissed him.
- c. He used a sword against him.
- d. He kicked him.

15. Which disciple disowned Jesus after his arrest?

- a. James.
- b. John.
- c. Peter.
- d. Simon.

16. Jesus was put on trial to see if he was guilty. What was the name of the man who questioned Jesus?

- a. Barabbas.
- b. Pontius Pilate.
- c. Judas.
- d. Peter.

17. Jesus was not found guilty but the people wanted him to be crucified anyway. They released a prisoner to keep the crowds happy. Who was released?

- a. Barabbas.
- b. Pontius Pilate.
- c. Judas.
- d. Peter.

18. Jesus was led away to be crucified. How was he attached to the wooden cross?

- a. Stuck on with glue.
- b. Nails hammered through his hands and feet.
- c. Hung on with his hands.
- d. Attached by his clothes.

19. What did Jesus say just before he died?

- a. "It is finished!"
- b. "I must go now."
- c. "It is time to die."
- d. "The end is near."

20. Jesus was crucified on a Friday. What is this day known as?

- a. Good Friday.
- b. Palm Friday.
- c. Easter Friday.
- d. Boxing Day.

21. The Jews did not want Jesus' body to be on shown on the Sabbath. Where was his body placed?

- a. A garden.
- b. A grave.
- c. A tomb.
- d. A pit.

22. Jesus claimed he would rise from the dead after how many days?

- a. 2
- b. 3
- c. 4
- d. 100

23. After the tomb was found empty, a woman was very upset. What was her name?

- a. Gabrielle.
- b. Mary Magdalene.
- c. Sarah.
- d. Naomi.

24. Jesus appeared to his disciples but they thought He was a stranger. How did they know it was Him in the end?

- a. He took the bread and thanked God for it.
- b. He told them his name.
- c. He knew their names.
- d. He spoke about God.

25. The rising from the dead has a special name. What is it?

- a. Crucifixion.
- b. Resurrection.
- c. Communion.
- d. Miracle.

Answers on page 7

➤ How many words can you make out of the word Easter?

2 letters:

3 letters:

4 letters:

5 letters:

➤ **Answers:**

1. b
2. c
3. a
4. b
5. d
6. c
7. c
8. a
9. b
10. b
11. c
12. c
13. c
14. b
15. c
16. b
17. a
18. b
19. a
20. a
21. c
22. b
23. b
24. a
25. b

The Easter Story - Solution

Find the following 25 hidden words from the Easter story in the grid.
(They can run in any direction (horizontal, vertical, diagonal, forwards and backwards).)

Jesus	high priest	King Herod	tunic
Mary Magdalene	Jerusalem	disciples	crown of thorns
Peter	cross	last supper	nails
Pontius Pilate	silver pieces	angel	
Caaphas	Judas Iscariot	empty tomb	
Centurion	Golgotha	passover	

How many words did you make out of 'Easter'?

2 letters

as, at

3 letters

are, art, ate, ear, eat. era, rat, sat, sea, see, set, tar, tea, tee

4 letters

ease, east, rate, rest, sear, seat, star, seer, tare (weed), tear

5 letters

aster, eater, stare, steer, tease

➤ EASTER

Easter is a special time for Christians. All over the world people remember the death and resurrection of Jesus. Jesus came into Jerusalem riding on a donkey. The crowds waved palm branches. When Jesus visited the Temple he was angry that people were selling things and cheating each other.

Jesus and his friends, known as the Disciples, gathered together to celebrate the Jewish Feast of Passover. During the meal they had some bread and wine. Jesus tried to warn his friends that he was going to be killed. During the meal Judas slipped away and betrayed him to the Roman soldiers.

After the meal Jesus went to a quiet place to pray. The Roman soldiers and the Jewish leaders came and arrested Jesus. The next day was a Friday and Jesus was killed. His friends were very sad. They put his body in a tomb and covered it with a stone. Then they hid away because they were scared.

On the Sunday Mary went to the tomb but Jesus body had gone! Two angels were standing beside the tomb. They told her Jesus has risen from the dead. Jesus appeared to many people after this and he showed that He was alive again. Christians celebrate this event at Easter.

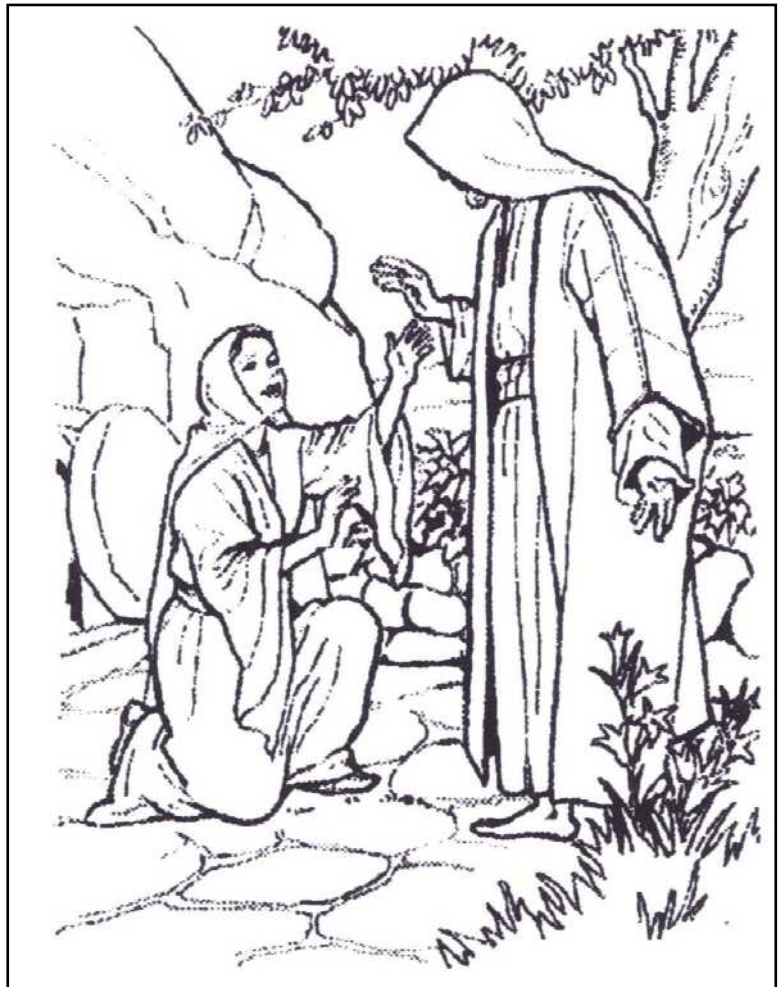
USE THESE WORDS TO FILL

IN THE SPACES IN THE

STORY BELOW:

Easter	donkey	cheating
Passover	Judas	Jesus
tomb	angels	body
Christians	alive	wine
Roman		

➤ COLOUR THE PICTURE



_____ is a special time for Christians. All over the world people remember the death and resurrection of _____. Jesus came into Jerusalem riding on a _____. The crowds waved palm branches. When Jesus visited the Temple he was angry that people were selling things and _____ each other. Jesus and his friends, known as the Disciples, gathered together to celebrate the Jewish Feast of _____. During the meal they had some bread and _____. Jesus tried to warn his friends that he was going to be killed. During the meal _____ slipped away and betrayed him to the Roman soldiers. After the meal Jesus went to a quiet place to pray. The _____ soldiers and the Jewish leaders came and arrested Jesus. The next day was a Friday and Jesus was killed. His friends were very sad. They put his body in a _____ and covered it with a stone. Then they hid away because they were scared. On the Sunday Mary went to the tomb, but his _____ had gone! Two _____ were standing beside the tomb. They told her Jesus had risen from the dead. Jesus appeared to many people after this and he showed that He was _____ again. _____ celebrate this event at Easter.

➤ Colour this picture of Jesus on a donkey on the day known as Palm Sunday.

