

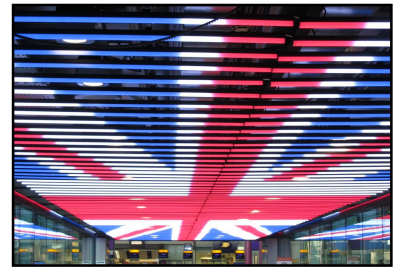
S*ParkLife 7

(Lockdown News 24)

Stanborough Park Church
Newsletter: May 2022

❖ IN THIS ISSUE:

- Jubilee Celebrations in the Park
- World Adventurer Day/Adventurer Bible Experience update
- Church Matters 1: Announcements and Information/Prayer Corner
- Memorial Service for those who died during the pandemic
- SEC Healthfest held on Stanborough Park
- Church Matters 2: Ministerial Messages – time to re-engage
- Funeral of Nan Tucker and 'My Final Letter to Miss Nan'
- The Stanborough Park Church Story 2: Updates and BBC Celebrity Organist Plays the New Church Organ
- Youth Concert , One Vision Holds a COVID-19 Memorial Service and The Final Word
- Appendix: More Photos from the Jubilee Picnic



❖ JUBILEE CELEBRATIONS IN THE PARK



Hundreds of members and their families, along with some from the community, gathered on the field by the BUC to celebrate the Queen's Platinum Jubilee. It was intended to be an occasion to help to bring the church community together after the enforced separation caused by the lockdowns. People socialised in groups, eating meals they brought with them or purchased from stalls. Others browsed the stalls set up around two sides; Pat's stalls proving to be particularly popular as was the face painting and the bouncy castles never seemed to be without occupants. £1,450 was raised for charities.

Elsewhere massages were being given, races were organised by Paula Carrillo and the Pathfinders for the children and a group of boys never seemed to tire of a game of football. Many children took part in the treasure hunt, Pastor Geert acted as Master of Ceremonies and he and Cathy Boldeau organised the patriotic group sing-along at the end of the proceedings; the sight of him waving a Union flag during 'Land of Hope and

Glory' will live on in memories although, as he pointed out, William III of Orange, the husband of Queen Mary II, was also Dutch!

Meanwhile a few willing volunteers operated a hand car wash in the church car park as a fundraiser although Gabriel probably hadn't expected something like this when he agreed to become a 'missionary' at SPC!

Fortunately, the weather was kind and stayed dry with sunshine for much of the time. Summing up the day Audrey says, "Judy Plaatjes, Michele Vitry and I were delighted that so many from

the community joined with the church members for such a fun afternoon. Many people helped make the day a success and we are grateful to each one of them."

Many thanks to Audrey Balderstone and her team of ever-willing helpers for their efforts in producing such a successful event. Photos and videos taken at the event can be found on the church's Facebook page and web site.

If you have any to share please send them to news@stanboroughchurch.org



❖ **WORLD ADVENTURER DAY** was held on 21st May and was an Exciting Day for all Adventurers, ours included, who spent a 'magnificent day' at Newbold College Sports Hall. The service started at 11:00 am with praise and worship, music items and a word from Vanesa Pizzuto. After a picnic out on the lawns of the college for lunch, they commenced 'THE BIG ADVENTURERS COMMUNITY IMPACT PAINT-A-THON', an 'Adventure Sabbath Treasure Hunt' as well as a 'Little Lights Adventure Craft'. Adventurer Leader, Megan Joseph, recalls that the day "Was a massive success and the children had the most amazing day enjoying all the activities that were planned, and our club sang their favourite song 'Be a Missionary'." She has sent photos of the day to share with the church community.

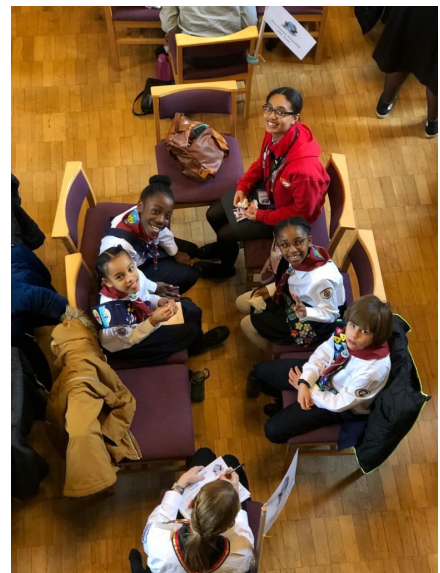


The Big Adventurers Community Paintathon!



❖ **ADVENTURER BIBLE EXPERIENCE - Ireland stage:** "The team came 1st place and had the most amazing time," according to Leader, Megan Joseph, who sent the photo, right, of the event.

- Those who have travelled recently may recognise the photo of the illuminated Union flag on page 1 which has appeared at Heathrow T5.



❖ CHURCH MATTERS 1: ANNOUNCEMENTS and INFORMATION

- **PARALLEL IN THE PARK** runs from May - September (weather permitting). If it's dry then it's in the park. All are welcome to stay on for a picnic where we can enjoy each other's company. In the event of wet weather, we will meet in the Cedar/Sycamore room. Service continues to start at 11am.
- **WEDNESDAY NIGHT MEETINGS** will be held in the Armstrong Hall and also on Zoom at 7pm. [Meeting ID](#): 519 552 6863 & Passcode: Pray3r (all lower case).
- **FUTURE COMMUNION SERVICES** from 9th July onwards Communion Services will be celebrated jointly by Parallel and Family Worship services in the main sanctuary. **At the recent Church Board meeting concerns were raised by the Head Deacon and Deaconess that they will not have sufficient team members to facilitate foot washing.** It may be possible to recruit helpers for the deaconesses, but deacons will be more of an issue as they should be ordained to serve Communion. The Head Deacon and Deaconess will meet with the Pastoral Team to discuss plans further and report back at the next Board meeting.
- **DEVELOPMENT OFFERING** "giving is slightly down but budget offerings continue to increase." Church Treasurer
- **ROMANIAN BAPTISM MAY 7th**: 300 people from four Romanian groups/churches attended the service when 13 Romanian members were baptised. A letter of thanks and appreciation has been received. However, no deacons or deaconesses who were scheduled to help turned up, leaving Eustace, Annalisa and Massimo with lots of work. The Church Board has expressed its thanks to them.
- **40 DAYS OF PRAYING AND FASTING** began 10th June, daily @ 6-6:30am; also available on Zoom.
- **SOUTH ENGLAND CONFERENCE PRAYER RETREAT** is to be held 15-17th July. If you are interested in attending please contact Uche Ademuyiwa ([Uche](#)) or Bella Rajasekaran ([Bella](#)).
- **SUNDAY AFTERNOON TEATIME Concerts** are back! Details will be announced in the church bulletin/online.
- **THE PRAYER MINISTRY TEAM** has started a 'WhatsApp Group' for everyone. On this forum you can make your public Prayer Request and you will be reminded of all the Prayer Activities. If you would like your details to be added please contact [Bella](#) or [Uche](#).
- **'CHURCH AT PLAY' run by the Health Ministries**, an outdoor activity scheduled for Sunday 5th June, was postponed following a bad weather forecast.
- **THE WELFARE DEPARTMENT** is urgently in need of girls' clothes from baby to 10/11 years. Contact Pat Walton on 07788311097 if you can help. **She would also welcome pillows.**
- **ADRA UK:** Please support the Annual Appeal by placing a donation in one of the special 'DO GOOD' ADRA envelopes, asking for an ADRA 'Home Can', writing a cheque to ADRA UK or donating online. "If you donate online or send a donation directly to ADRA, please let me (Audrey) know so that we can keep a total of the contributions from Stanborough Park Church." The funds collected this year will go to assist projects in Myanmar, Ghana, South Sudan, Thailand, Nepal and Sri Lanka.
- **ADRA UK:** Audrey has launched a new 'Just Giving' page for 2022 and invites you to join her by donating to ADRA in recognition of birthdays, anniversaries, and special occasions or to give thanks to God for His blessings. Please go to 'AUDREY'S FUNDRAISER FOR ADRA' to donate. Alternatively, you can place a donation in the special 'DO GOOD' envelopes. If you donate directly to ADRA please let us know so that your donation can be added to the Stanborough total. The total in 2021-2 was just over £21,000.00.

(more on next page)

- **GRACE LEAH SWAIN**, daughter of Carl and Joanna and sister to Hana, who has just celebrated her first birthday, was dedicated in May with all her grandparents in attendance.
- **EVANGELISTIC BIBLE STUDY TRAINING** began on 17th May. 16 people have signed up for 6 sessions over 12 weeks to learn how to share the Bible with people in the community.
- **MIDWEEK SPIRITUAL REFLECTIONS TO BEGIN:** A number of people have expressed appreciation of the devotionals in the e-bulletin; some have requested something similar to be sent out mid-week by email. Some of the elders and the Pastoral Team have agreed to provide this service.
- **FIRST AID TRAINING:** two people have volunteered for training; a further three will have their existing certificates checked to ensure that they have the appropriate qualification.
- **ADVENTURE AND PATHFINDER BIBLE EXPERIENCE:** "Thank you all for your prayers and support. Our teams attended the test in Belfast (ABE & PBE) and in Oregon (PBE only). They all achieved a 1st place in their category! Praising God for the opportunity this year to study and see the children grow in friendships and in the knowledge of God through the books of 1 Kings and Ruth. May His Word abide in them forever and be a compass to guide their lives. **Next year's book of study** is the Gospel of John. We encourage all the church to study this book and let us know if you would like to mentor Adventurers and Pathfinders in their study."
- **TED YOUTH CONGRESS, FINLAND 2-7 AUGUST, 2022:** this event is only open to over18's. The Church Board has voted to provide financial support to enable the young Missionaries, Flo and Gabriel, to attend this event as they will be supporting nine of our young members who will also receive a grant.
- **KATEŘINA MIKLICOVÁ** is a 19 year old Czech student studying Social Work at the University of Ostrava in the Czech Republic. From September '22 to January '23 she will be studying at the University of Hertfordshire via the Erasmus+ programme. Please see Pastor Terry if you can help her to find affordable accommodation.
- **SPANISH SDA FAMILY REQUESTING EXCHANGE VISIT** (friends of Miriam & Arto Keshishian who live in Madrid): "Our son Sam (18 in August) is and is very fond of English and its culture. He has achieved his B2 Cambridge certification and is interested in having a summer exchange with an SDA teenager in the U.K from July to August. Sam is very helpful, healthy and cheerful. He is willing to help at home looking after children, garden, pets, shopping, helping others and is very fond of cooking. References will be provided.
- **OPEN GARDEN:** Audrey Balderstone's annual fundraising event at 'Blue Firs' will take place on Thursday, 23rd June, 6:30-8:30pm. Proceeds in aid of The Hospice of St. Francis, Berkhamsted.

❖ **PRAYER CORNER:** Please pray for:

Diane and Dennis Johnson and their family as they cope with Diane's terminal illness

Simeon Williams who is recovering from a serious accident.

Terry Menkens and his family who are always grateful for continued prayers.

Those who are suffering from cancer, COVID and other health issues.

Families who are experiencing recent bereavement.

Financial help for families who are struggling due to recent economic crises.

The victims of the conflict between Russia and Ukraine as the war continues.

The families who are suffering bereavement due to the shooting at a Primary School in Texas.

If you have private Prayer Requests please place them in the Prayer Box or email Florence Allen. LIZALLF@hotmail.com

❖ **MEMORIAL SERVICE FOR THOSE WHO DIED DURING THE PANDEMIC**

Many members lost loved ones during the pandemic when numbers attending funerals were limited. Ruth Blewitt, whose husband Frank died of COVID soon after lockdown began, ended up watching his service online. It was a hard time not being able to say a proper goodbye so a special service of remembrance was held at the church on 14th May and can be viewed on the church web site (in two parts) and also on the church's YouTube channel. <https://livestream.com/accounts/640318/events/3160916/videos/231120682>

The list below of those who died includes SPC members, former members and family of current members. Samuel Kayode Adebayo, Ayokunle Akintemi Ayo-Ipaye, Margaret Anthony, Myrtle Cooper, Leslie Dean, Peter Hinks, Juliana Keshishian, Kathy Meedin, Monica Sheminant, Rachel Surridge, Pastor Ron Surridge, Pastor John Arthur, Frank Blewitt, Pastor Patrick Boyle, Muriel Bussue, Tina Cuthbert, Bessie Donaldson, Victoria Regina Joseph, Joy McCrow, Margaret Read, June Williams, Lindsay Rohrlach, Denver Annable, the mother of Yetunde Bright, Dale Montague, Wendy née Anthony and Nan Tucker.



❖ **SEC 'HEALTHFEST' HELD ON STANBOROUGH PARK**

The event sponsored by SEC was held on 1st May with Pathfinders from various churches stretching right across North London being very much in evidence. It was a much larger affair than our Jubilee celebration with stalls spread around the sports field and a large stage with a female group performing gospel songs. Cars were parked on the grass on both sides of the drive up to the school and crowds wandered across the fields although it looked as though there were more church members present than local residents. The inflatables proved very popular with the children as did the section with animals which were available for petting!



❖ CHURCH MATTERS 2: Ministerial Messages – two agree it's time to re-engage

• **IS COVID THE LAST NAIL FOR CHRISTIANITY IN EUROPE? Time to end the season of COVID and start a new one; your church needs you back, according to Pastor Dejan Stojkovic**

It was sudden and unexpected. For Adventists closure of churches has always been associated with the period of persecution just before the Second Coming and now here was an instruction to close churches coming from the SEC President anticipating government action. But it wasn't just the British Isles, right across Europe, and indeed the world, life was closing down. For those in essential roles life continued as before but with complications, for others facing furlough and redundancy life took a strange turn.

According to Pastor Dejan Stojkovic in his sermon on 7th May, Christianity then became consumer-oriented as worshippers disengaged from church attendance and churches found innovative ways to keep in touch and minimising the effects of being cut off from each other and 'active service'.

After two years of closures, he said, recent research has stated that Christianity is dead in Europe and has asked if it will survive there post COVID - **is COVID the last nail?** His response was, "Only if we let it; we are the ones who determine if this is the end of Christianity. The season of lockdown is now over" and now we must enter a new one, re-engaging with the church and its community.

He pointed out that just how Christianity survived is a mystery. Christ lived in a small, obscure country, Judea, which was far from popular, especially with its Roman masters who at the best of times did not tolerate change and any suggestion of insurrection. At that time there were at least 30 others claiming to be the Messiah yet they have disappeared into obscurity. He was a labourer from Caesarea Philippi in what is now part of Syria. There is no reference to him in contemporary Roman literature, the Jews did their best to ignore His existence and there was no Bible for 300 years, all information was essentially shared by word of mouth - gleaned from letters written by the apostles. Yet the Coliseum in Rome, once the scene of Christian

martyrdom, now has a cross over its doorway. Christianity changed the world; it has gone on to influence art, literature, philosophy and legislation

Pastor Dejan maintains that now that we are coming out of COVID restrictions it is time to move on from the season of COVID and inactivity, a 'consume and disengage' period and re-engage with the church. We must re-engage and re-connect, not just for the sake of Christianity and Adventism in Europe but for the sake of our young people he said. We all need to get involved and have a role to play; like the parts of the human body, we all depend on one another.

He stressed, "It is time to move on," away from the "Season of COVID", to return to church physically, to re-connect and re-engage; the church cannot function without us and we cannot function without it. He invited his audience to look for a moment when they can invite someone undergoing a challenging period in their lives to come along to church with them. "If you are not here you will invite no-one".

It is easy to get lost in a big church he reminded us and advised members to join small groups, "build a community around yourself and if you don't fit, don't leave, go search for somewhere else." If you are bored, get involved, there are so many areas of the church that needs volunteers was his advice.

Summing up, now, he insisted, is the time to move away from consumer Christianity, to get involved and be part of the body of Christ. He reminded us again that we cannot function without the church and the church without us. We all have a role to play and depend on each other. Is COVID the last nail for Christianity? "Only if we let it," he says.

- *Pastor Dejan, now Youth Director for the TED, began his ministry at Stanborough Park Church. He claims that it still holds a place in his affections and regards it as his 'home church'. He pointed out that he had now reached 40 and speaks more slowly than when he was younger!! Perhaps the biggest change is that he no longer gives the AV camera operators the difficult task of trying to follow him as he walked around the platform delivering his sermons!*

• **COINCIDENCE OR DIVINE INSPIRATION?**

Pastor Terry insists it was a coincidence, that he had no idea that Pastor Dejan was preaching on the same theme he was developing for his sermon the following week!

The same topic, maybe, but his sermon neatly blended in, being complementary to that given the previous week.

For Pastor Terry there are five components for a successful Christian life: Bible study, prayer, worship, witness and fellowship. Good fellowship is important for Christian growth. Remote Christianity has its limitations. Would the Toddlers Group be as successful by Zoom? The interaction between the adults with other adults and the children with their peers is an important part. The same is true of worship. **We need to return to a post-COVID church, to enjoy the fellowship that is so important for a vibrant Christian life.**

Both sermons can be viewed on the church web site and its YouTube channel.



• **JUST WHAT IS BEHIND THE RELUCTANCE TO RETURN TO ATTENDING CHURCH IN PERSON?**

- Although the sudden break with enforced lockdown took some getting used to, does breaking the habit after a couple of years of inactivity church-wise prove harder?
- Is it because it is so much easier to watch online rather than get up, organise the family and possibly face a long journey to church?
- Could it be that the pews seem empty and people are waiting till everything goes back to how it was? The cameras don't show that the pews get fuller as they get nearer the back of the church! Will anything go back to exactly how it was? Much, including us, has changed.
- A commonly-heard remark is that people no longer recognise the faces they see in the congregation. Is this putting people off returning? Unfortunately, many familiar ones have died, gone into care/have health concerns or moved away during the past two years and been replaced by unfamiliar faces - scope for getting involved and getting to know new people perhaps?
- Are people genuinely still fearful of catching COVID in a confined space? Re-read the article by Volker Herkner in the March newsletter.

For those still reluctant to come back – the church needs you as much as you need the church. The church pews will never be full again unless everyone is prepared to make the first move. Many already have! The church is fuller than the cameras would have you believe – they can't reach everywhere!



❖ FUNERAL OF NAN TUCKER

Nan Tucker's funeral was held at Stanborough Park Church on 26th May followed by a service at West Herts Crematorium. She had taught English at Stanborough School for three decades, retiring some 30 years ago. She enjoyed good health until recently and spent the last fortnight of her life in Watford General Hospital.

She was a lady who lived the Christian principle of it being more blessed to give than to receive and used her gift of evangelism to its full extent.

Her eulogy/life sketch was given by Dr. Peter Bone who read out three tributes to her (two of which are to be found in the previous issue of this newsletter) as well as a posthumous letter from his granddaughter, Sophia Bone, who lives in America but had regular contact with her. Sophia's tribute is reproduced below.

The third tribute was from, Sheila, a close friend and former neighbour who revealed the surprising fact that she spent many hours with Nan watching her favourite TV shows, such as 'Murder She Wrote' and 'Midsomer Murders', and she always managed to guess the guilty party! She also told how Nan's favourite flower was the bluebell and that she loved visiting bluebell woods in the springtime.



• My Final Letter to Miss Nan

I regret to say that I didn't write to Miss Nan for a while and I wish she got to see this one: my final letter to her. I wish she knew how much she meant to me and how much she changed me and made me a better person.

Miss Nan was my dad's school teacher and for some reason she took a liking to my dad which is funny because I've heard he was a less than perfect student. Maybe it's because my dad is part Welsh, but Miss Nan liked him and that affection transferred to my sister and I.

I used to write to Miss Nan about various things - from the Enid Blyton books I was reading to my reading assignments for school and my relatively new love for Agatha Christie. Miss Nan would write back with lists of books she thought I might enjoy. Her reading lists have forever changed me. One of the books on her list was *The Chronicles of Narnia* by C.S. Lewis. I never told her, but those books and the story of C.S. Lewis helped me find my faith again when I was going through a difficult time. I'm seventeen years old now and I still return to Miss Nan's reading lists and C.S. Lewis.

Miss Nan would go further and also send me books in the mail. I'm pretty sure I was one of few 10 year olds who read Shakespeare's plays. I never complained when we were assigned Shakespeare years later in English because of that early exposure. Additionally, Miss Nan also sent me a book about a Welsh woman, Mary Jones, who walked three days to obtain a Bible. She made me proud to be Welsh. I am a quarter Welsh, a quarter English, a quarter Indian, and a quarter Chinese, born in Kenya, raised in a suburb of Los Angeles in the U.S. and sometimes I feel like while my DNA says I'm Welsh, I'm not really Welsh. Miss Nan and her books reminded me of the value of my Welsh heritage and in turn every place that makes up my identity.

My first poetry book came from Miss Nan: 'A Child's Garden of Verses' by Robert Louis Stevenson. I read the entire book cover to cover and since then, poetry has remained a constant in my life, sparking curiosity and helping me develop more empathy.

Author Helen Keller once wrote 'What we have once enjoyed we can never lose. All that we love deeply becomes a part of us.' Miss Nan changed my life and became a part of me. I owe so much to her and I wish that she knew that. I hope I can inspire people and share my passions with people the way Miss Nan did. I hope I can love people the way Miss Nan did: simply, unconditionally, and faithfully.

Signed,

Sophia Bone

❖ THE STORY OF STANBOROUGH PARK CHURCH 1: UPDATES

• KINGSWOOD HOUSE AND ESTATE

The Kingswood Estate with its mansion, four smaller houses and a farm were purchased by the church providing income, work for the students and additional accommodation for the students.

Since dealing with this in a previous issue some additional facts have come to light about the estate's large country house/mansion which was part of Stanborough Park for more than a decade. Initially used for female student accommodation it later housed denominational workers.



The photo above right has been received from the archivist at Watford Museum in a photo swap and shows the house with its previous owners. She is currently working on producing a document on the history of the estate and had no information about it after its purchase by the church so was delighted to receive two photos of the house from Agnes Poulton's archive. She was able to identify one of these photos (shown below) as definitely being Kingswood House as it bore no similarity to the other one, which had definitely been identified as being the property, and must have been a rear view of it.



The archivist has identified this as the front door of Kingswood House thanks to the photo above. The cart with its milk churns has 'College Farm Dairy' and 'Kingswood' painted on its side. It was possibly taken by Agnes as it was found in her collection but, as it is much older than most of the other photos it contains, she may have obtained it from another source

This is the home of Agnes Poulton from the time she came to Stanborough Park until her family was rehoused by Watford Council after the sale of the Kingswood Estate. It was one of a number of huts which had formerly been used to house soldiers during WW1. It was situated on a distant part of the estate on the site of what is now the playing field of Leavesden Green Primary School.





This is a distance view of the hut. Others, also housing workers, can be seen behind. Conditions were primitive with no indoor sanitation. The path across the field has long since disappeared; the field now being covered by the Sherwood Estate.

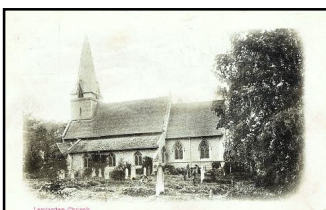
• THE DEVELOPMENT OF NORTH WATFORD (Leavesden Road area)

In the last newsletter the development of Watford to the north of the railway line was chronicled. Leavesden Road, shown here, started near the site of the first railway station and was the site of the first Adventist church in the town. Worshippers initially met in the nearby Co-operative Hall on Sabbaths. The Watford Observer recently published some information about this area's development produced by Watford Museum.



'The museum's volunteer archivist Christine Orchard said: "In the late 1800s a new road named Leavesden Road was built on the line of an old footpath that went across fields in the direction of Leavesden and Abbots Langley. The old path's route took it past Callowland Farm and stopped where it does today, at Gammons Lane.'

"The land's development for housing would have been among some of the earliest roads laid out to the north of the railway bridge on St. Albans Road. Much building work had already been progressing on the south side of the bridge although roads were not filled with houses all in one go. When it was decided to create a new road, it would have been divided up into individual plots. Batches of these plots were sold at public auction, sometimes split between numbers of developers."



• THE LAST RESTING PLACE OF PASTOR McAVOY LOCATED

Pastor McAvoy was the church's first minister - whose funeral was the first to be held in the recently-built church. In the previous issue there was some uncertainty as to his last resting place but this has now been cleared up.

Thanks to Dr. Derald Barham for contacting Audrey Balderstone after reading about Pastor McAvoy's funeral (the first time this newsletter has received any feedback!). He recalls his father, Herbert (who was the first person to be baptised at SPC and was a student at the college at the time), telling him of the time he walked behind the minister's hearse all the way to the cemetery at All Saints Church in Horseshoe Lane (left). The church was unable to confirm this and suggested visiting the archives at County Hall. A large gathering would certainly have made a report in the local newspapers but Watford Museum says that these would also be held at the County Archives. In the 75th Anniversary edition of the 'Messenger' an article written by Dennis Porter states that it was originally planned to have a cemetery attached to SPC but was not followed up as there was ample local provision.

❖ BBC CELEBRITY ORGANIST PLAYS THE NEW CHURCH ORGAN



The photo above from the BUC archive shows organist Sandy McPherson signing autographs after playing the new SPC organ for the congregation. The photos are poor quality but show the church being full for the occasion.

Unfortunately, it has proved impossible to date this photo so far or to find anyone who admits to recalling the occasion! If you can help please let us know. news@stanboroughchurch.org

Sandy McPherson was actually a Canadian who came to Britain in 1928 when he became the resident organist at the Empire Cinema in Leicester Square, remaining there until 1938 when he was appointed BBC Theatre Organist. During the war he featured in many programmes, sometimes for as much as 12 hours a day. After the war, in the 1950's, he was best known for his light religious music Sunday morning slot called 'The Chapel in the Valley'. He also had light music request programme popular with the older generation. From time to time he would give recitals in churches in England and Wales. He died in 1975.

The man front left facing the camera is Bert Black who came from the West Indies about 1956/7 so this would probably have been taken in the late 1950's/early 1960's in an age when many women still wore hats to church! Does anyone recognise anyone else?

- **WITH NO CHURCH HALL THE ESTATE HALL (pictured right) WAS USED FOR CHURCH SOCIAL EVENTS** in the 1950'S and beyond. It was a rather basic and austere metal building, originally intended for use by the youth of the church, squeezed between the school and the Press. By then it was also used by the school for PE, cookery and assemblies and as a location for children's Sabbath School. Other Children's Sabbath School locations were to be found in rooms in the school and the Press. Children made their way down the drive, unsupervised(!), to the church between services!





One event held in the Estate Hall during the 1950's was the Annual Children's Sabbath School concert. The photo, left, would have been taken about 1955. Pastor David Cox is back left wearing a top hat, next to Frances Gammon Johnson. Delphine Proudley Wright, a relative of the Swains, is standing front right, Linda Rose Kitchen is second front right on the front row and your editor is one of the cats in the centre

of the second row. Can you spot Pat Walton in the photo? (See below for answer.)

❖ **ONE VISION HELD A COVID-19 MEMORIAL SERVICE IN THE PEACE GARDEN IN MAY** which was attended by representatives of different faiths in the community.

❖ **YOUTH CONCERT HELD ON 30TH APRIL:** during April fundraising by the youth of the church raised £500 for ADRA. (photos from Flo)



Answer: Pat is seated front left.

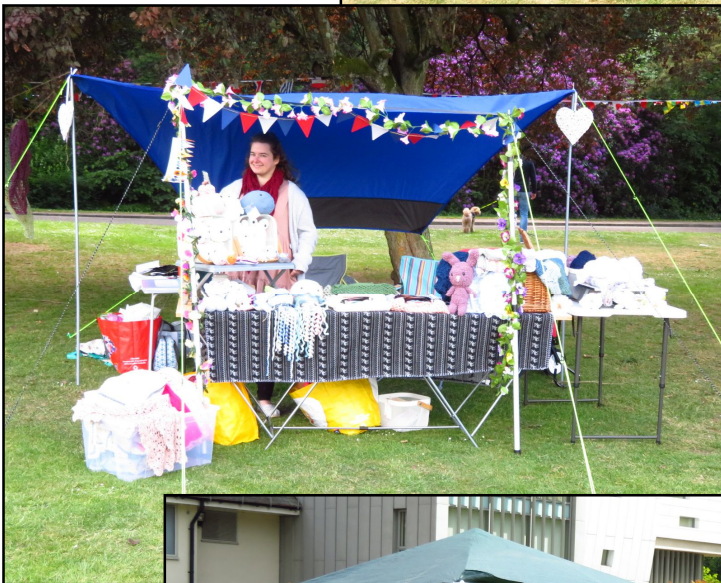
❖ **THE LAST WORD**

Friendship is like a book. It takes few seconds to burn, but it takes years to write.

❖ APPENDIX: MORE JUBILEE CELEBRATIONS PHOTOS

● STALLS APLENTY





• ENJOYING FELLOWSHIP



• AND FUN

